

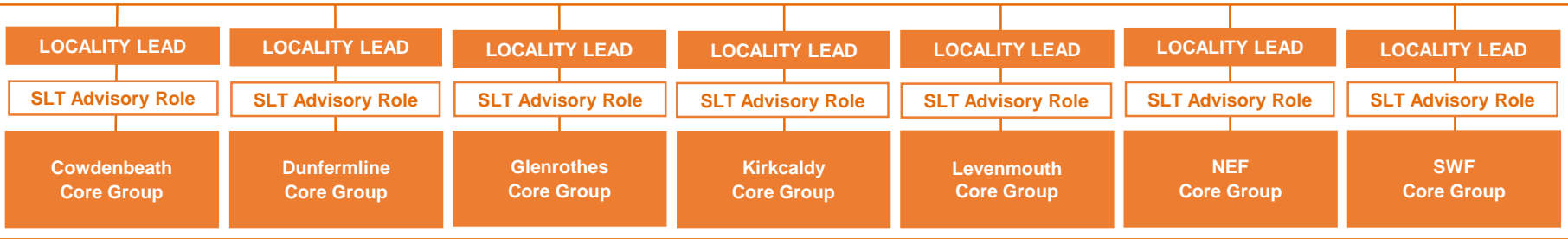
Governance of H&SC Locality Planning and Reporting Route

(This Governance Structure will be reviewed in consideration of changes made to H&SC priorities, structure & leadership)

H&SC Locality Planning Wider Stakeholder Groups: are made up of representatives of all key stakeholders (local community groups, operational staff, commissioned third sector, independent sector and mentors) and **contribute to the development of priorities for each locality, ensuring a grass routes approach in planning to ensure local needs influence the strategic planning process**



H&SC Locality Planning Core Groups and Leads are made up of key professionals, practitioners and people who use services, **who are responsible for the planning and delivery of identified priorities on behalf of their locality**



Strategic Direction – Reporting Route

- Fife H&SCP Strategic Planning Group – Localities Sub Group
- Fife H&SCP Strategic Planning Group
- Fife H&SCP Senior Leadership Team
- Fife H&SCP – Integrated Joint Board

Planning our Priorities

- | | |
|--|--|
| <input type="checkbox"/> Achieving Pharmaceutical Excellence | <input type="checkbox"/> National Health & Wellbeing Outcomes |
| <input type="checkbox"/> Alcohol Framework 2018: Preventing Harm | <input type="checkbox"/> NHS Fife Clinical Strategy 2016-2021 |
| <input type="checkbox"/> Community Led Support Programme | <input type="checkbox"/> Plan 4 Fife 2017-2027 |
| <input type="checkbox"/> Ending Homelessness Together: A High Level Action Plan 2018 | <input type="checkbox"/> Primary Care Improvement Plan, GMS Contract |
| <input type="checkbox"/> Fife Children’s Services Partnership | <input type="checkbox"/> Public Health Priorities for Scotland |
| <input type="checkbox"/> Fife Council – Local Housing Strategy 2015-2020 | <input type="checkbox"/> Public Health Strategy |
| <input type="checkbox"/> Fife H&SCP Strategic Plan for Fife (2019-2022) | <input type="checkbox"/> Rights, Respect and Recovery: Alcohol and Drug Treatment Strategy |
| <input type="checkbox"/> Getting it Right for Every Child (GIRFEC) | <input type="checkbox"/> Scotland’s Digital Health and Care Strategy |
| <input type="checkbox"/> Keys to Life Strategy | <input type="checkbox"/> Scotland’s National Dementia Strategy 2017-2020 |
| <input type="checkbox"/> Mental Health Strategy 2017-2027 | <input type="checkbox"/> Sexual Health and Blood Borne Virus Framework 2015-2020 Update |