

Fife Health and Social Care Partnership

Strategic Plan for 2023 - 2026

Easy Read Version



This plan was produced for Fife Health and Social Care Partnership by CH Consultancy on behalf of Values Into Action Scotland.

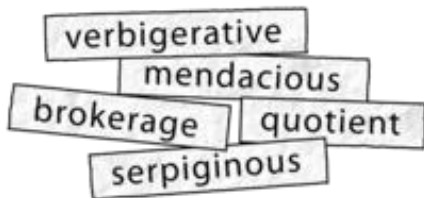




This Easy Read document is about **Fife Health and Social Care Partnership's Strategic Plan**.



A **strategic plan** is a high-level plan. It sets out what an organisation wants to do over a few years. This plan is for **2023 to 2026**.



There may be some words you don't know in the document. When you see them for the first time they will be in **bold**.



It will also say what the words mean. Every time you see them again, they will also be in **bold**.



There is a word list with their meanings at the end of the document.

This document shows how services will work to keep giving the best services we can to people in Fife.



Public Bodies (Joint
Working) (Scotland) Act
2014



The law in Scotland says local authorities (councils) and health boards have to work together.

It is called the **Public Bodies (Joint Working) (Scotland) Act 2014**.

Nicky Connor is the Director of the **Fife Health and Social Care Partnership (FHSCP)**. Nicky will lead on putting the **strategic** plan into action.

Fife Health and Social Care

Partnership includes employees from:

- Fife Council
- NHS Fife
- Other local care providers



They work together to deliver services.

This is known as health and social care **integration**.



This plan was co - produced by:

- **Fife Health and Social Care Partnership**
- people who need health and social care services

The joint services in Fife are:

- adult and older people's social work
- community health services
- children's community health
- housing services
- some hospital services

Fife Health and Social Care

Partnership divides Fife in to **7** areas.

These are called **localities**.

The **7 localities** are:



1. South West Fife
2. Dunfermline
3. Cowdenbeath/Lochgelly
4. Kirkcaldy
5. Glenrothes
6. Levenmouth
7. North East Fife



The plan aims to make life better in Fife and improve services.

These include:



- improving the health and wellbeing of the people who live in Fife
- making sure everyone can access the services they need
- encouraging independence
- making sure everyone is treated equally
- housing and homelessness
- the ongoing effects of the pandemic





We want the people of Fife to be able to live independent and healthier lives.



Our plan for **2023** to **2026** is supported by some specialist plans and **strategies**.



Some of these **strategies** are about:



1. Alcohol and Drugs
2. Advocacy
3. Dementia
4. Home First
5. Learning Disability
6. Local Housing Strategy
7. Mental Health
8. Carers
9. Primary Care
10. Prevention and Early Intervention





Our top **priorities** are below.

Priorities are the things that are most important.

We want Fife to be a place where people and communities do well.

We want our services to work well and be inclusive.

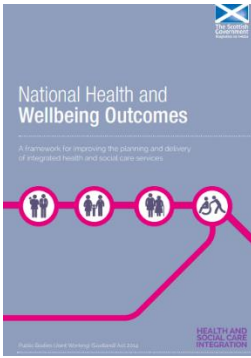
We want services in Fife to act quickly to support people.



We want Fife to be somewhere that promotes dignity, equality and independence.

We want Fife to be somewhere people and services work together.
We want people to have access to quality services.





We will measure how we are doing to make these things work. 2 things we will use to do this are:

1. The National Health and Wellbeing Outcomes for Health and Social Care (**NWO's**)

2. Public Health Priorities for Scotland (**PHP's**)



Health and Social Care services are responsible for making the best use of the money they have. These are called **budgets**.



Sometimes this means we need to do things differently in services.

Sometimes the way a service is run might need to change.



Our **budget** shows the amount of money we have and the things that we need to buy.



It also shows where we need to make savings on spending.



Our employees work hard to give the best services to people in Fife.



To do this we need to support, care for, and train our workers.



Our plan for this is to support workers to develop their careers.

We will support our workers in the communities.



We will add to the number of workers we already have. We will look at new ways of finding workers.

These will include:



- youth employment
- apprenticeships
- employment programmes
- information about jobs across the whole Partnership



We will listen to our workers and learn from the things they tell us.

We will encourage workers to look after theirs and others mental wellbeing.

The Participation and Engagement Team will help all the teams in the Partnership to:



- work with local communities
- listen to the views of the local communities



We will make sure we listen to what people tell us about their experiences.



This will help us to make sure we get the best outcomes for everyone.



We want teams and services to look at the ways they work to make sure they are giving the best service possible.



Sometimes this will involve providing services in different ways, such as video calls or other digital services.

Fife Health and Social Care Partnership will make sure that everyone is treated equally.



We will make sure everyone is treated with dignity.

We will help people to be as independent as possible.



We will do this in different ways.

We will make our system of collecting equality information better.



People with experience of not being treated equally will have more chances to get involved in things.



We will work more with communities and partners already working with people who are not treated equally.

We will employ workers from different backgrounds and abilities.



We will work to make sure we understand more about people and groups who are not treated equally.



We want Fife to be a place where all children and young people:

- are loved
- are safe
- are respected



We will improve our children's care services.

We will listen to what young people in care tell us.



We will work to make sure they get more choices and chances.

We will make sure we follow the law and guidelines of children's rights in all our services.



In Fife we care about working with you to make sure you get the right care.

We want you to have a say in decisions made about your needs.



National Care Service

The Scottish Government has started to design the new **National Care Service**.



Fife Health and Social Care Partnership will be involved in this work.



It is hoped that the new National Care Service will be in place by 2026.

What the words mean.

Budget	The money you have to spend on things you need.
Health and Social Care Partnership/ Integration	When the local council and local NHS work together to deliver services.
Localities	The 7 areas that make up Fife.
NWO's	The National Health and Wellbeing Outcomes for Health and Social Care (NWO's). A way to help us measure how well we are doing.
PHP's	Public Health Priorities for Scotland (PHP's). A way to help us measure how well we are doing.
Priorities	Things that are the most important.

<p>Public Bodies Act</p>	<p>The law in Scotland that says local authorities (councils) and health boards have to work together.</p>
<p>Resources</p>	<p>The things you already have to help you get the best value for money.</p>
<p>Strategies/Strategic Plan</p>	<p>Things you will do to make your plan work.</p>